



ECO - SMART

All New Homes Are Not Created Equal

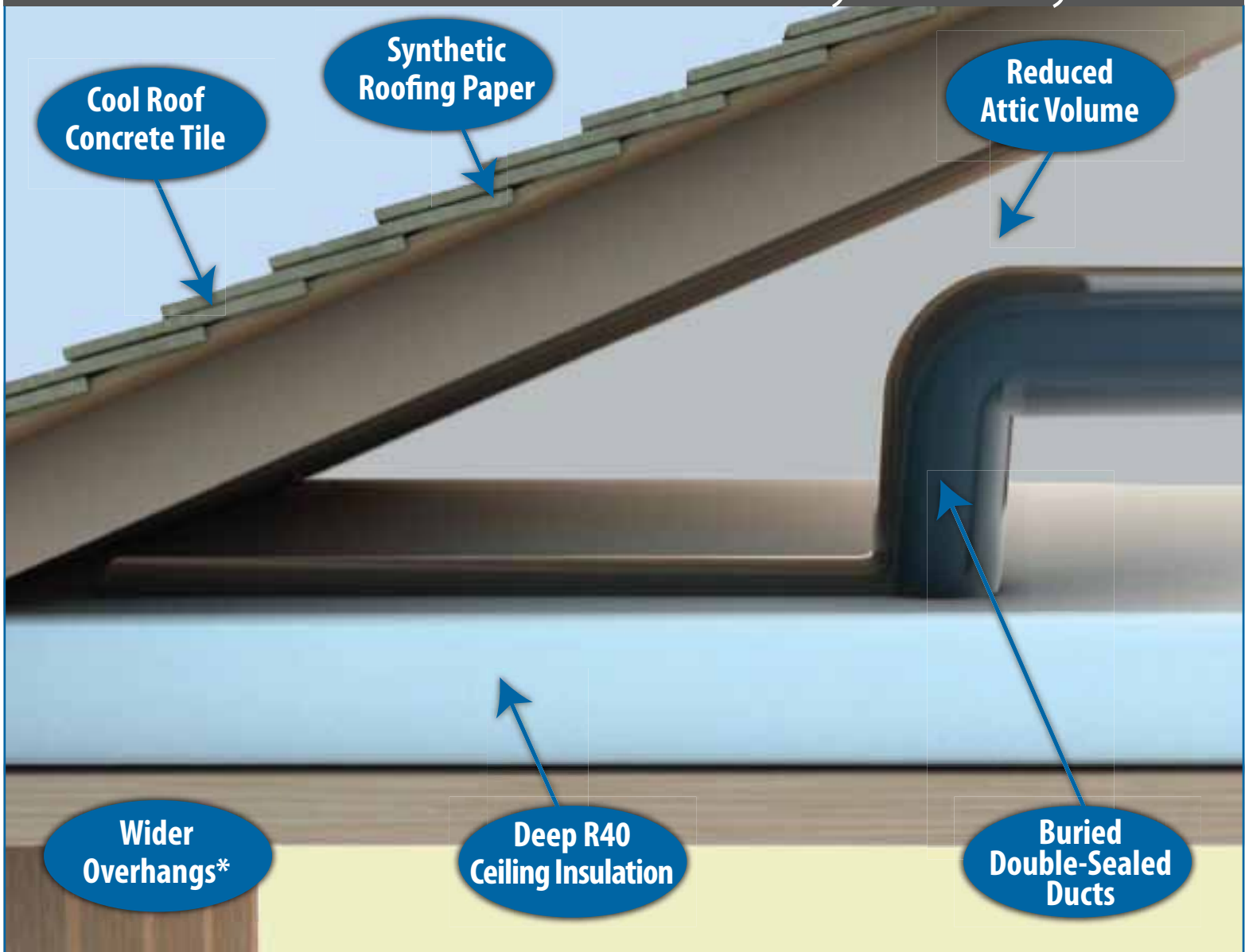
Granville Eco-Smart features provide up to 30% more energy efficiency than many other new homes built today.

**Everyday comfort.
Sustained energy savings.**

GRANVILLE

Passion, Commitment & Innovation *Everlasting*

Revolutionary Roof System



Granville's Revolutionary Roof System has been specifically designed for the Central Valley's climate. While most new home builders are building more 'Green', Granville Eco-Smart takes it to the next level providing you a more comfortable home with lower energy expenses.



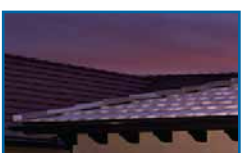
Cool Roof Technology

Concrete tile with special coating that reflects heat away from the attic. Reducing A/C usage up to 30%.



Synthetic Roofing Paper

High Performance synthetic roofing paper provides superior moisture protection and is Eco-Friendly.



Reduced Attic Volume

Less attic area results in less hot air in the attic and reduces heat transfer to the house.

Wider Roof Overhangs

33% wider overhangs provide additional shade to exterior walls.



R40 Attic Insulation

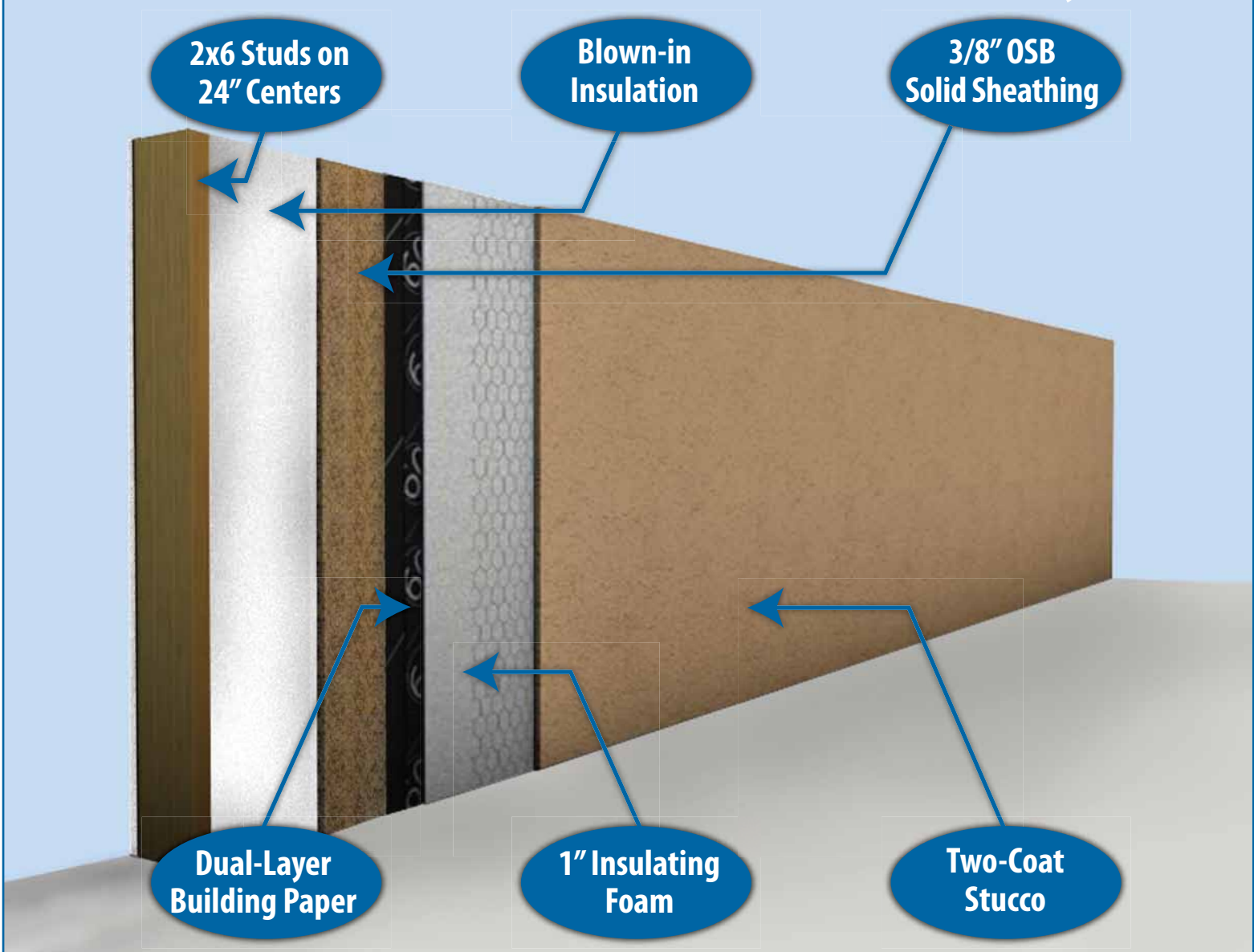
Deep insulation to provide added comfort and energy savings.



Insulated Air Ducts - Buried in Insulation

Double-sealed ducts are routed down under insulation wherever possible to protect conditioned air from attic heat.





Granville's Advanced Wall System integrates 2x6 studs that provide an amazing 56% larger insulation area - resulting in significant comfort and energy savings advantages over other builders who use 2x4 studs in their exterior walls. Another way Granville Eco-Smart out perform other new homes.



2x6 Exterior Studs on 24" Centers
56% increase in insulation capacity over traditional 2x4 construction. Substantial structural strength.

Double Wrapped Building Paper
Two layers of high grade building paper for added moisture protection.



Blown-in Wall Insulation
R27.9 cavity insulation factor with gap-free coverage providing substantial energy savings and a quieter interior for your home.

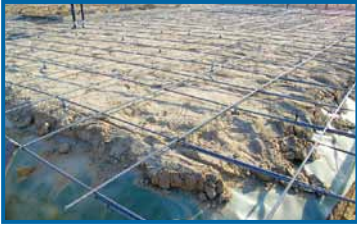
1" Insulating Foam
Additional insulation value, noise reduction and moisture protection.



Solid Sheathed Exterior Walls
3/8" OSB Plywood on all exterior walls to reduce air infiltration providing a safer and more comfortable home.

Two-Coat Stucco
Wire mesh backing for adhesion and reduction of cracking. Enhanced exterior appearance.



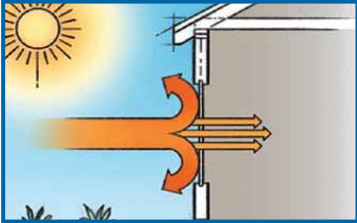


Steel Reinforced Concrete Foundation

Steel rebar embedded in an enhanced concrete mix for added strength and reduced cracking.

Tankless Water Heater

Provides endless hot water. Heats water only when needed not 24/7 like tank water heaters.



High Value Low-E Vinyl Windows

Coated glass reflects both heat and ultra-violet rays away from the home for added efficiency.

Insulated Garage Doors

Provides a more comfortable garage area and reduces heat transfer to home.



High-Efficiency Heating and Air Conditioning Unit

High 14 SEER rating for better A/C performance and efficiency. 92% AFU for better heating performance.

Fiberglass Entry Doors

Attractive 8' tall doors provide better durability and performance without depleting forests.



Efficient Lighting and Plumbing Fixtures

Decorative fixtures that provide better performance and energy savings.

Low Water Use Landscaping

Hydro-zoned landscape design with drought tolerant plants for beauty and water savings.



Programmable Thermostat

Multiple programming modes for added comfort and savings while providing ease of use.

Construction Site Recycling

80-90% of Granville's construction waste is recycled in our construction recycle and re-use program



Visit the  Learning Centers located in our model centers to learn more about the many energy saving features built into our homes!